

BARRINGTON SOFTWARE INCORPORATED

CookerPro® PDA Kitchen Magician Commercial

CookerPro®

PDA

Kitchen Magician

Users Manual 3/15/2003

Barrington Software Incorporated
418 East Oakwood Drive Barrington, IL 60010
Phone 847.487.7020 • Fax 603.947.8869

What is PDA Kitchen Magician?

PDA Kitchen Magician is software that makes a CookenPro database available to any PDA (Pocket Data Assistant) that reads Excel.

Installing PDA Kitchen Magician

PDA Kitchen Magician can be installed from a CD or downloaded from www.cooken.com/downloads and installed. Double click the setup.exe file and the wizard will guide you through the installation.

How to Use PDA Kitchen Magician

Go to Start->Programs->CookenPro->PDA Kitchen Magician to open the program.



Illustration 1 This is the first screen you will see when you open CookenPro PDA Kitchen Magician

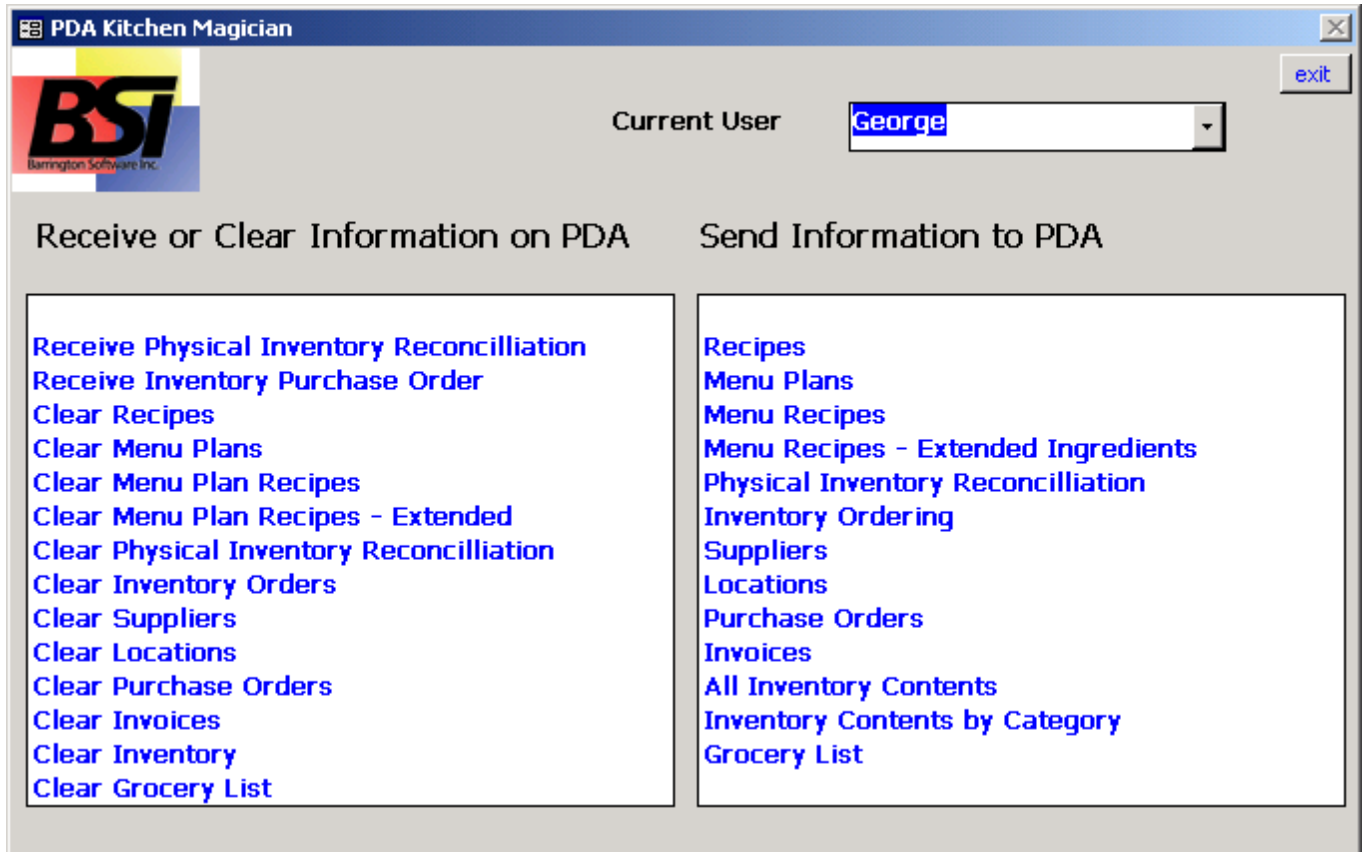


Illustration 2 The PDA Kitchen Magician

The form above is the form you will use most often. Select any of the categories on the right to send information to your PDA and select on the left to clear or delete files previously sent to your PDA or to receive 'Physical Inventory Reconciliation' or an 'Inventory Purchase Order'.

Using Your PDA Toolbar

Select the appropriate tool - Settings, Display Log, Advanced Find, Set Synch Folders, Maintain Users, and Compact PDA Database - on the toolbar as you use your Kitchen Magician.

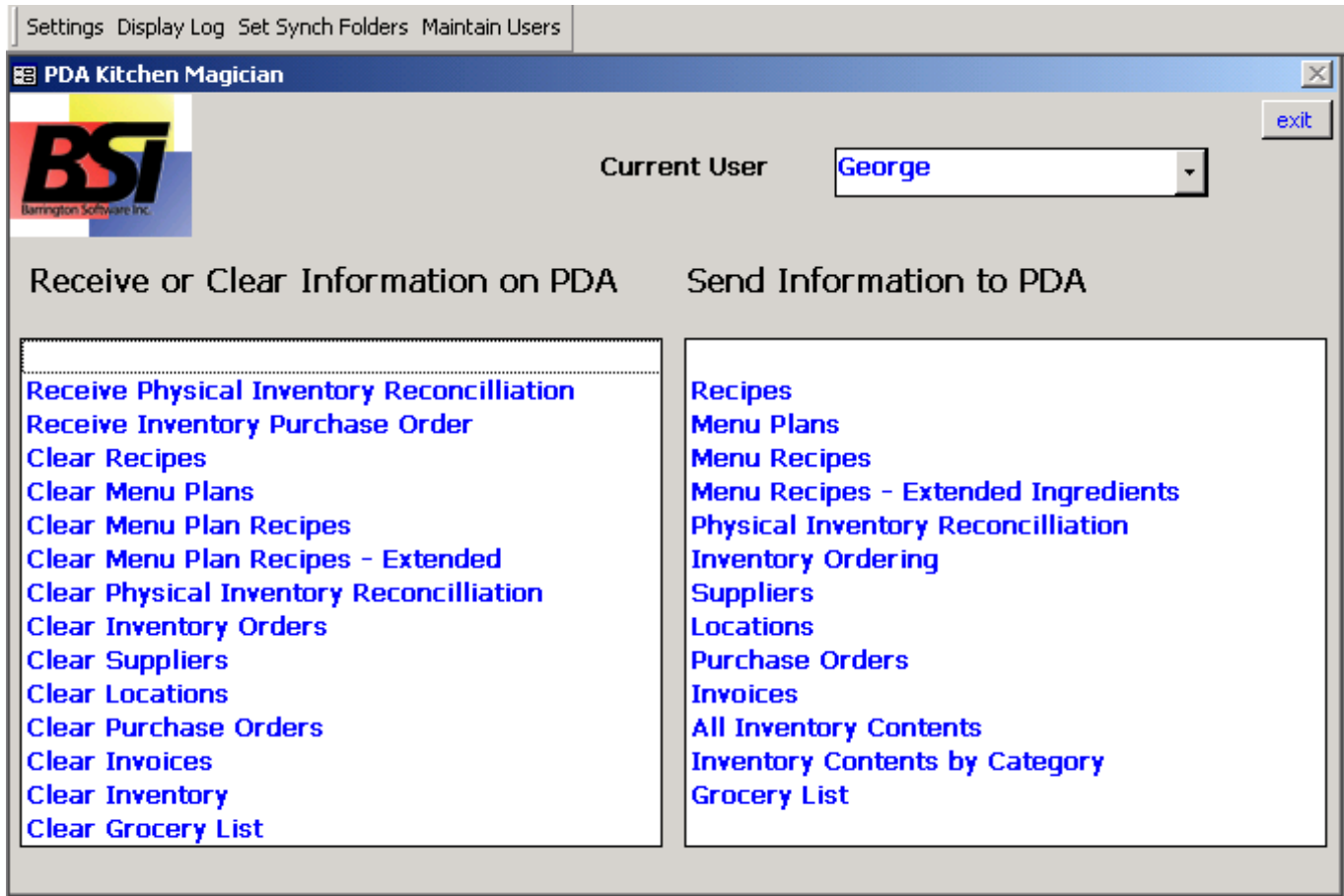


Illustration 3 PDA Toolbar

Maintain Users

Your first task will be to add users. Type your name or the name of any user you would like to add. You can add additional users or delete a user at any time.

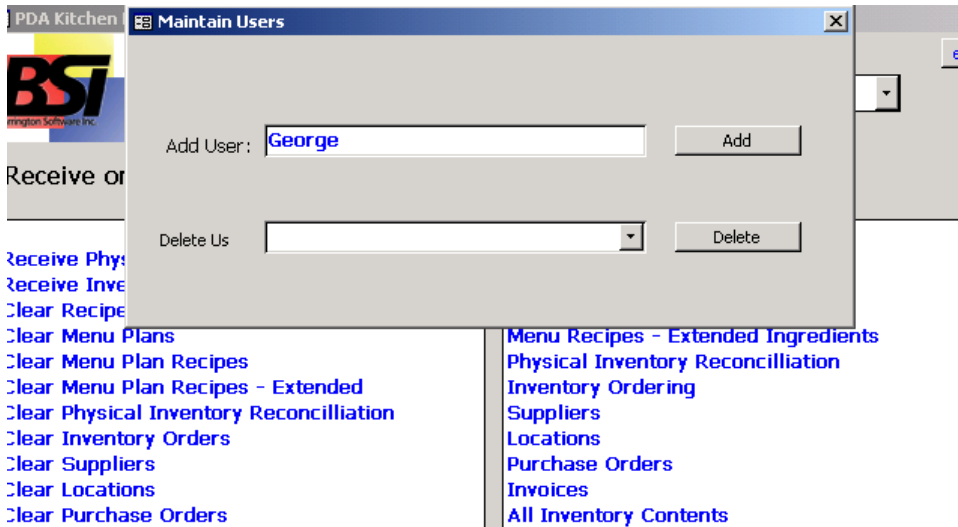


Illustration 4 Maintain Users Form

Settings

The next step is to choose your settings. Your User Name appears in the top box. Select the type of device you are using and select other settings:

- Show all logging - gives a complete list of files sent to your PDA
- 10 recipes per file -sends the ingredients of 10 recipes to one file; this setting is in effect if ingredients are the only part of the recipe selected to send to your PDA. This setting is intended to provide a convenient way to rapidly view the ingredients of many selected recipes. For example, take your recipes to the grocery store. If you see something on sale or something that looks good (salmon), you instantly can know all of the ingredients required to make the dish. The recipes are organized alphabetically in files that are available on your PDA. The first recipe of the ten provides the name for the file; all of the other recipes are available from a drop down list when the file has been opened.
- Organize by recipe category - makes a folder for each category. This organization is provided for convenience. It can automatically make your recipes available on your PDA by category, "Soup", "Salad", "Main Course", etc. A word of caution about using categories - There is a limitation on the devices as to the number of categories available. A rule of thumb is to limit these to less than 100. As this number is approached, performance is adversely impacted.

- Metric - changes all measurements to metric, although recipes in CookenPro remain the same.

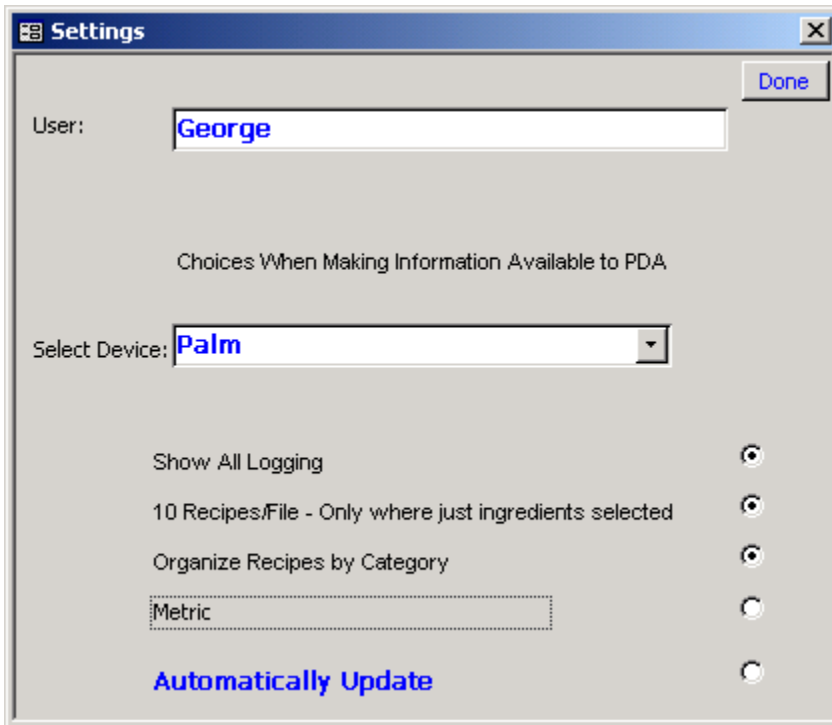


Illustration 5 Settings

Set Synch Folders

The last task before using your Kitchen Magician is to browse to the PDA Excel Synchronization Location.

If you have a Pocket PC, browse to the location where you defined the synchronization location at the time that you established a guest or partnership relationship between your desktop and PDA device. The convention for this folder name is a combination of the device name that you have established and "My Documents". It is located under the "My Documents" folder.

If you have a Palm, create a folder in a location that can permanently serve all Palm users that will use your computer. PDA Kitchen Magician software makes a folder for each user underneath. Use your Desktop Excel software (Documents to Go, Quicksheets, etc.) to establish synchronization relationships with files after they have been sent.

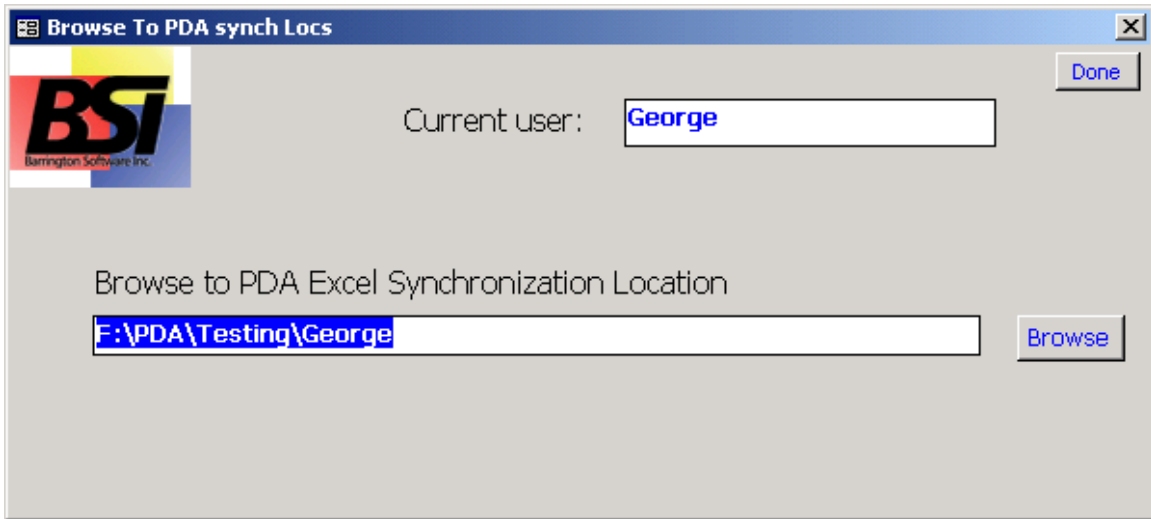


Illustration 6 Set Synch Folders Form

Send Recipes

Send

When you click Recipes, this screen will appear, allowing you to narrow your selection. Select a cookbook or cookbooks and a category or categories and click OK.

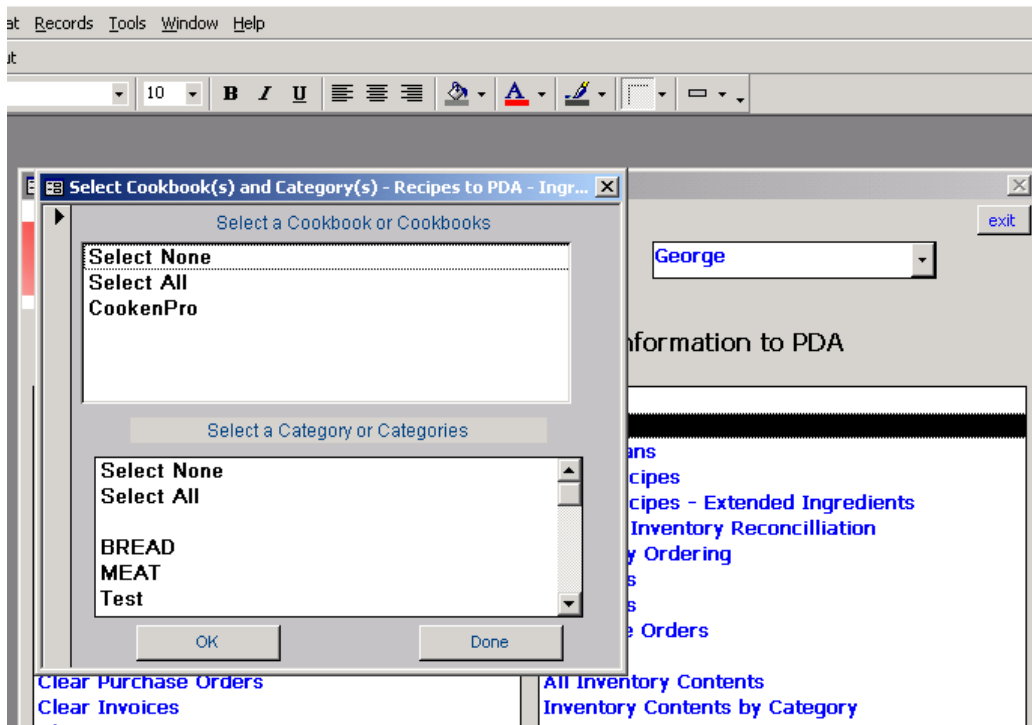


Illustration 7 Recipes To PDA – Select Cookbooks and Categories

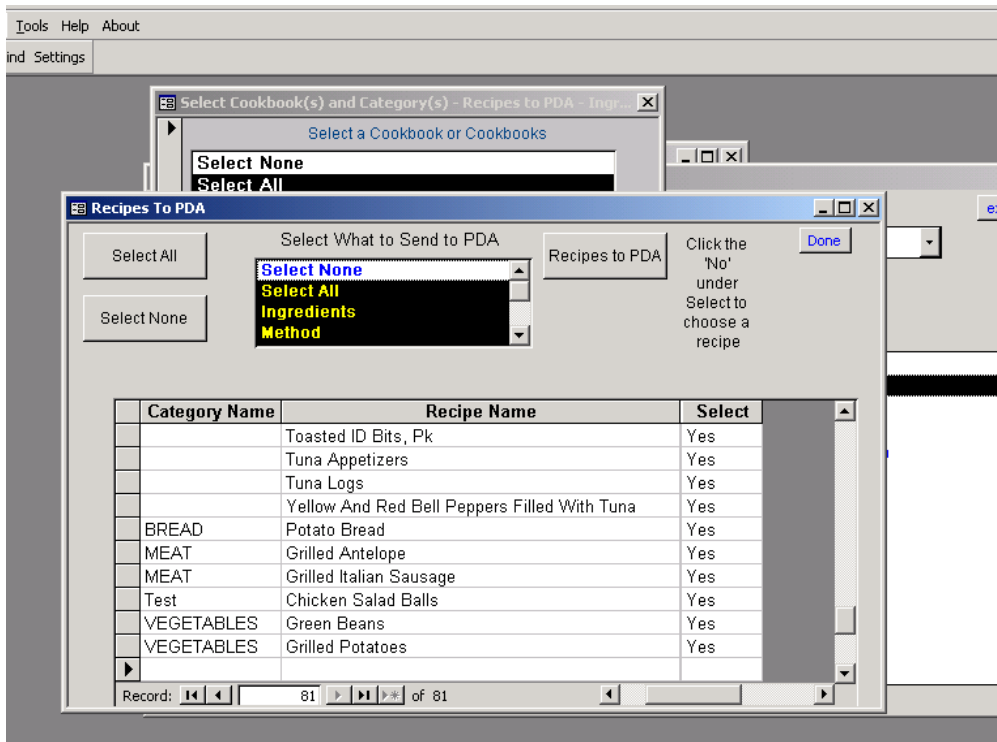


Illustration 8 Select Recipes and Recipe Attributes to Send to Your PDA

Click 'No' under Select to include a recipe or click 'Select All' and choose the recipe attributes you want included by selecting in the small box on top. The selections include ingredients, method, miscellaneous (cookbook, category, vegetarian, servings, serving size, yield, yield unit, weight watcher points, tools, and sell price), nutrition, and costing.

When you have completed your selection, click 'Recipes to PDA'. The recipes will go to your synch folder in a folder titled recipes. The recipes will go to one recipe per file with an excel worksheet for each attribute (ingredients, method etc.) that you have selected. If you have selected '10 recipes per file' in your 'Settings' and selected to send only the ingredients, recipes will be sent 10 per file. In addition, if you have selected 'Organize Recipes by Category', a folder will be made for each category and the recipes will be under the appropriate category with up to 10 per file.

Send Menu Plans to Your PDA

When you click 'Menu Plan', this screen will appear. Select the Menu or Menus in the large box and the desired attributes of the menu in the small box above. The selection includes: menu plans, items to satisfy a menu plan, menu plan costs, menu plan costs by day, menu plan nutrition, menu plan nutrition by day, menu plan RDI, and menu plan RDI by Day.

When you have completed your selection, click 'Send to PDA'. The menus will go to your synch folder with a folder for each attribute selected.

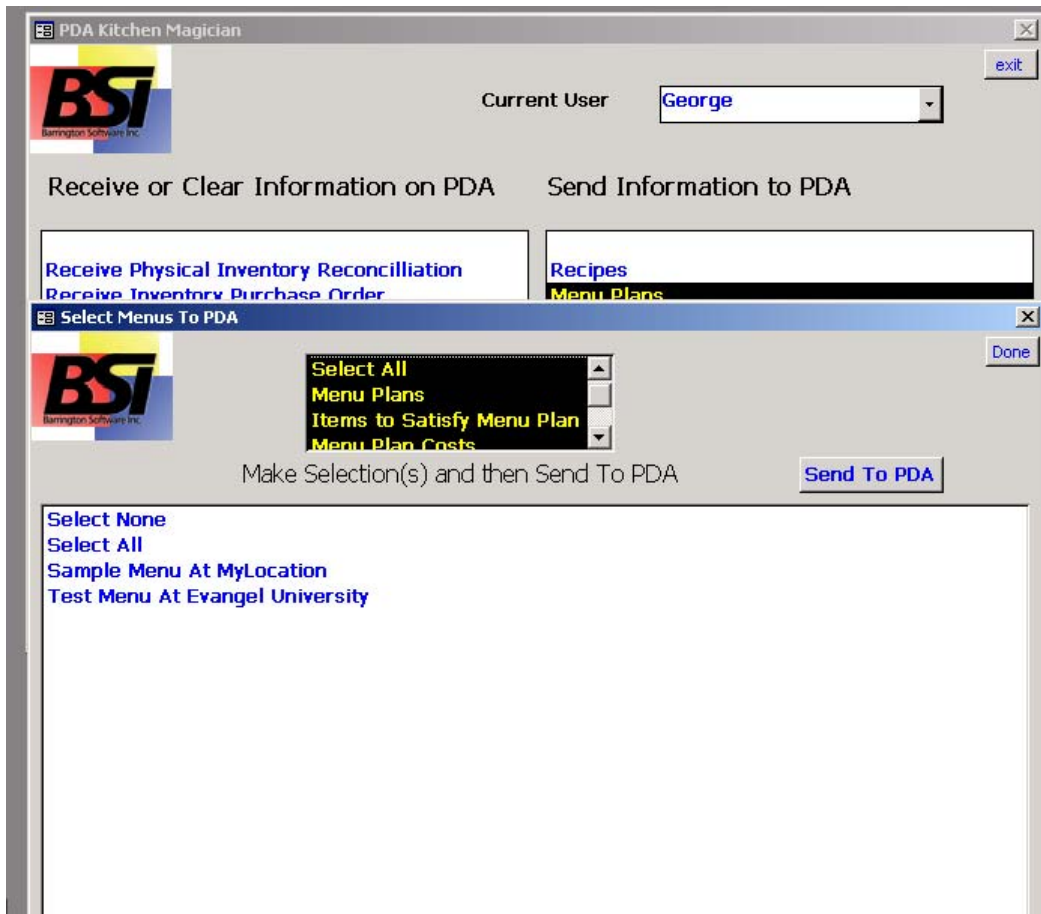


Illustration 9 Menus To PDA

Send Menu Recipes to Your PDA

Click 'Menu Recipes', and this screen will appear. Select the Menu or Menus in the large box and the recipes included will be sent to your excel synchronization folder. The recipes will be in a folder titled 'Menu Rec' and they will be organized one recipe per file with eight worksheets (one for each attribute – method, HACCP, etc., making it possible to easily view the information on your PDA. This selection sends menu plans as well as recipes. The menu plan information begins with 'Men-' and the recipe information begins with 'Rec-'.

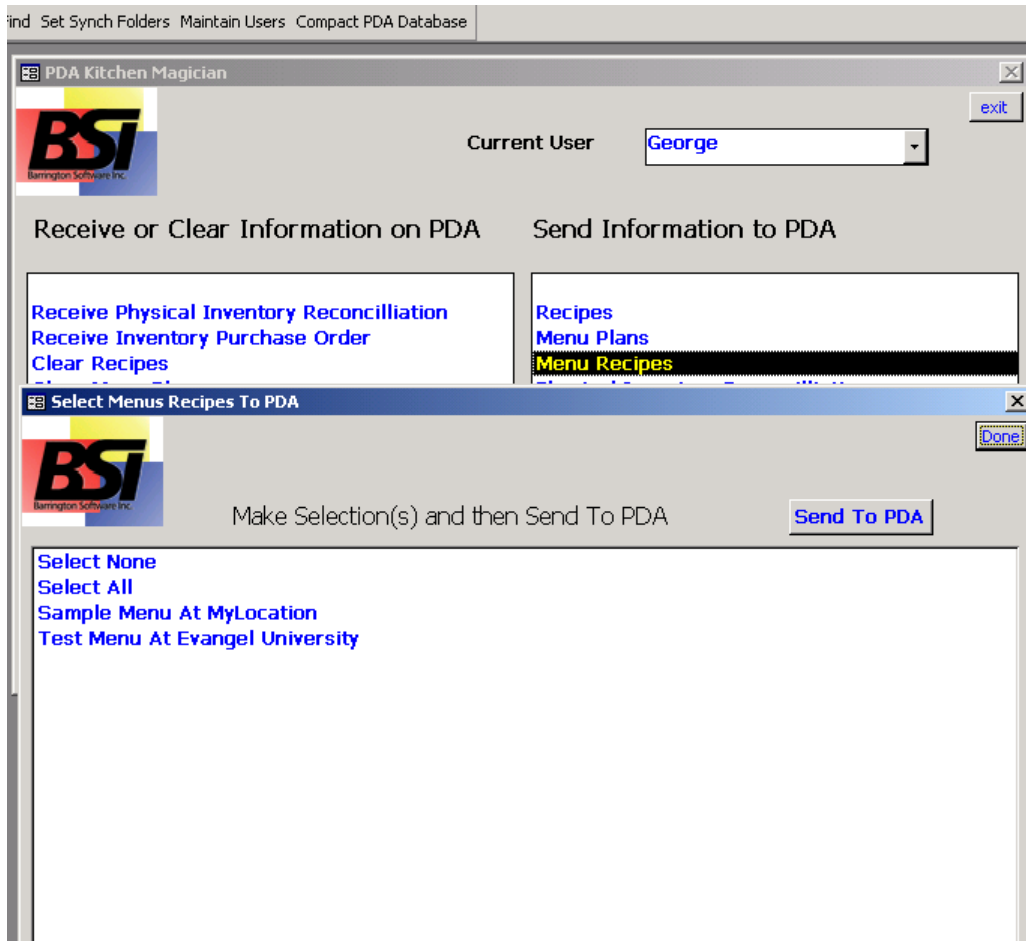


Illustration 10 Menu Recipes To PDA

Send or Receive Physical Inventory Reconciliation

Click 'Physical Inventory Reconciliation', and this screen will appear. Select the Storage Location or Locations and click 'Send To PDA'. Information is created in files that are named after each sub location at the delivery location that you have selected. These are for example "Freezer", "Dry Storage", "Cooler", etc. These are further organized by shelf. When you open a sub location file on your PDA, shelves are available by drop down list. When you select a shelf, all of the line items appear.

Change quantities to reflect actual inventory. Enter Purchase Unit Quantities under "PUQ". Enter Inventory Unit quantities under 'I/U Q'. Enter the Purchase Unit and Inventory unit quantities for items that require it, for example, '2' cases of soda and '12' cans. Some items have par based on I/U quantity only. For example, a case of 50 lbs of meat: Enter 10 under 'I/U Q'. This tells the software that 10 pounds of meat are left in the case and it should be reordered if par were set to 15 for this item

After you take inventory, click 'Receive Physical Inventory Reconciliation' on the left and the Physical Inventory Reconciliation form will open. Use the tool at the top to update your Inventory table with the information displayed.

If you discover, when taking inventory, a need to place an order, send an inventory order to your PDA.

Sending an Inventory Order sends the inventory organized by sub location with a worksheet for each shelf. See the picture below. The worksheet contains the Purchase Quantity, Purchase Unit, Item, and the ID. Change the Purchase Quantity (PQ) to whatever quantity you would like to order and you will be able to receive this back into the program where a purchase order will be generated.

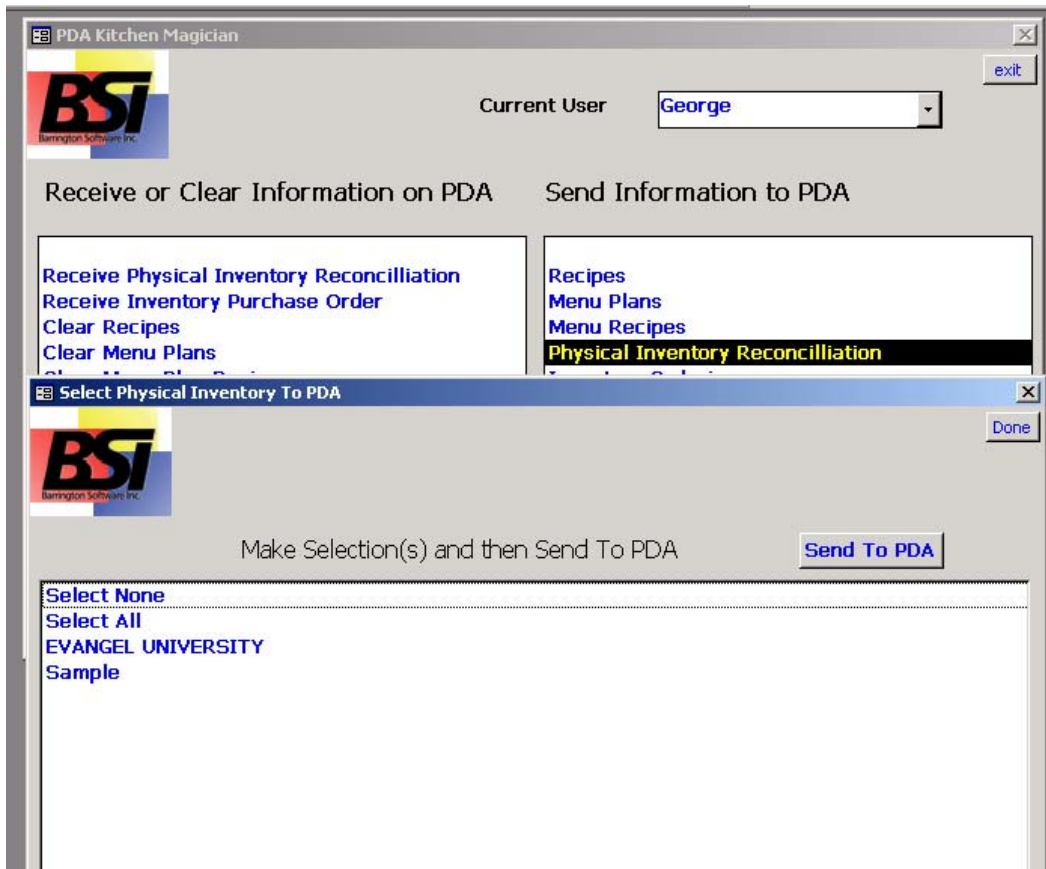


Illustration 11 Physical Inventory To PDA

Send or Receive an Order

Click Inventory Ordering to send an order form to your PDA. Enter the Purchase Unit Quantity (PQ) for each item to be ordered. When Manual Purchase Orders are received back into the CookenPro database, Purchase Orders for these quantities are automatically generated. The order contains the Purchase Quantity, Purchase Unit, Item, and the ID. Enter the Purchase Unit Quantity (PQ) for each item to be ordered. When Manual Purchase Orders are received back into the CookenPro database, Purchase Orders for these quantities are automatically generated.

	A	B	C	D	E
1	PQ	PU	Item	Primary Inventory ID	
2	0	Boxes	Snapper - Sample Inventory	1234-f	
3	0	EA	ALBACORE TUNA WHITE CHUNK	a-38	
4					
5					
6					
7					
8					
9					
10					
11					
12					
13					
14					
15					
16					
17					
18					
19					
20					
21					
22					
23					
24					
25					
26					
27					
28					
29					
30					
31					
32					
33					
34					

Illustration 12 The Fish Shelf of an inventory order.

Send Suppliers to Your PDA

Click Suppliers and a 'Supplier' folder will be made with one file for each supplier. All contact information for the supplier will be in that file.

Send Locations to Your PDA

Click Locations and a 'Location' folder will be made with one file for each location. All contact information for the location will be in that file.

Send Purchase Orders to Your PDA

Click 'Purchase Orders' and all purchase orders will go to your synch folder in a folder labeled 'Purchase Orders'; they will be organized one per file and will include the item name, quantity, unit, cost per unit, total item cost, total purchase order cost, date ordered, delivery date, and vendor name.

	A	B	C	D	E	F	G	H	I	J
1	Inventory Item	Qty	Unit	Unit Cost	Total Item Cost					
2	BEEF TOP ROUN	1	EA	29.1	\$29.10					
3	40345 MOPH	1	EA	6.73	\$6.73					
4	ANGEL HAIR	1	EA	11.16	\$11.16					
5	BASIL LEAVE	1	EA	1.22	\$1.22					
6	40073 SQUEE	1	EA	5.37	\$5.37					
7	BEEF PATTY	1	EA	22.66	\$22.66					
8	RICE CONVE	1	EA	14.65	\$14.65					
9										
10	Total PO Cost				\$90.89					
11										
12	Date Ordered				2/2/2003 12:43:10 PM					
13										
14	Delivery Date				2/2/2003 12:54:33 PM					
15										
16	Supplier Name				MyGrocer					
17										
18										
19										
20										
21										
22										

Illustration 13 Purchase Order

Send Invoices to Your PDA

Click 'Invoices' and all invoices will go to your synch folder in a folder labeled 'Invoices'; they will be organized one per file and will include the item name, quantity, unit, cost per unit, total item cost, total purchase order cost, date ordered, delivery date, and vendor name.

Send All Inventory Contents or Inventory Contents By Category to Your PDA

Click 'All Inventory Contents' to send all inventory items to one excel file and click 'Inventory by Category' to make a separate file for each category.

Send a Grocery List to Your PDA

Select 'Grocery List' and a selection form will appear with all your saved grocery lists. Select any number of lists or choose select all; also, check if you would like your lists combined. If lists are combined, information is made available by supplier or grocer and organized by aisle or location.

View Your Display Log

If you have selected 'Show All Logging' in your settings, the display log will show a list of the information sent. The sample below shows a list of 'Pantry Contents by Category', which have been sent.

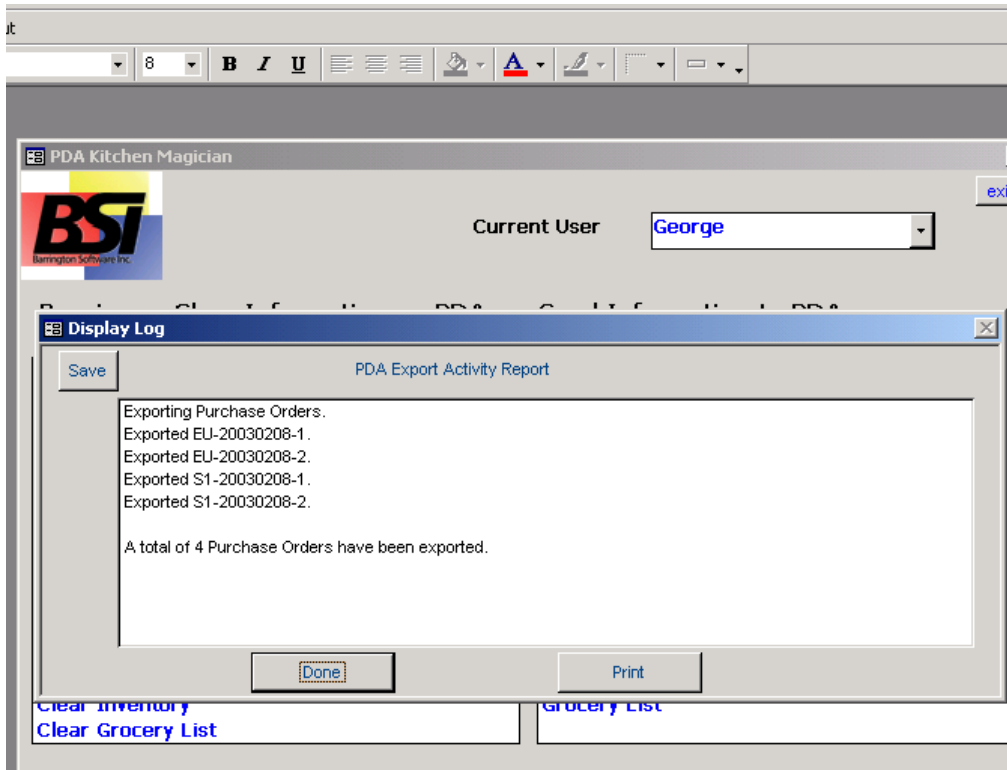


Illustration 14 Display Log

General Precautions

The kitchen provides a potentially hostile environment for handheld devices. Protect your device from grease either by only using the stylus and never your fingers or by using inexpensive, throwaway protective coverings. Never use kitchen cleaning solution or other cleaning fluids not recommended by the manufacturer of your device.

General Use

Just a few words about Excel on your PDA or Pocket PC - Excel provides a wonderful method of organizing and displaying information, which is why it was chosen as a vehicle for this product. You can get to your information on the Pocket PC, either by selecting folders and files from File Explorer or opening Pocket Excel. Tap 'view' at the bottom of your screen to make a full screen view. Categories of information are available from a drop-down list to the right of 'Ready' at the bottom of your screen. PDA Magician screens have been very carefully engineered so that no scrolling is required in most cases. Sometimes it would be convenient to make a column of information smaller or larger to display appropriate amounts of information. Use your stylus to drag the column widths smaller or larger at the top of your view. When entering information, we find the little typewriter at the bottom right of your view to be convenient. Tap it to bring the keys to the bottom of your screen. Tap the cell that you want to put information into and then tap the number or other that you desire to enter. The information appears at the top of the view. When you are sure its right, tap the destination cell. Tap the keyboard again when you want to go back to full screen view.

On the Palm tap "Sheets To Go" if you have Documents to Go by Dataviz. Most Palm devices are equipped with this software at purchase. If yours is not, it can be purchased at www.dataviz.com.

General Space Information

In general each Category of information that corresponds to an Excel worksheet takes up 2 thousand characters. What this corresponds to is as follows. If you have a storage card that is approximately 5 megabytes, you can safely put the ingredients from 2500 recipes on that storage card. We have found that number of folders or categories affect performance more adversely than number of recipes. We have gotten 6,000 files on our Pocket PC easily and think that the device could handle many more. We have not tested across the variety of Palm devices available, but would project that the higher end devices might behave similarly.