

BARRINGTON SOFTWARE INCORPORATED

---

Network Enable

Network Enable

NETWORK ENABLE

# Users Manual 9/29/2004

---

Barrington Software Incorporated  
418 East Oakwood Drive Barrington, IL 60010  
Phone 847.487.7020 • Fax 603.947.8869

---

# Table of Contents



What is Network Enable? 1

Getting Started	1
Install CookenPro or BSI Inventory Control	1
Install Network Enable	1
Login	2
Password Administration - Assign Users	2
Manage Network Connections	3
Toolbar	5
General Requirements	6
General Considerations	6
Backup	6
Recovery	7
Troubleshooting	7
Index	9

## Basic Operations

*A few basics for getting started.*

## What is Network Enable?

Network Enable is the software that allows multiple users to share the same BSI Inventory Control or CookenPro database on a network.

## Getting Started

### Install BSI Inventory Control or CookenPro Commercial

Installing BSI Inventory Control or CookenPro Commercial is your first task. This application must be installed first because it provides the database of information that will be shared.

### Install Network Enable

After BSI Inventory Control or CookenPro Commercial is installed, install Network Enable. Network Enable is only installed on one of the computers connected to the network. The computer selected should be the computer routinely used by the network administrator.

Before beginning the installation:

## NETWORK ENABLE

✚ Create a shared folder in a location that can be accessed by all users on the network.

✚ Mount a network drive on the Administrator's computer. This network drive must map to the shared folder. Go to Windows Explorer->Tools->Map Network Drive.

You are now ready to begin the installation. During the installation, a dialog box will ask you to select a 'Database Folder' which is the folder where the shared database will reside. Select the mounted network drive that you mapped to the shared folder. Note this location because it contains the data file you will want to back-up on a regular basis. Go to Programs->Barrington Software Incorporated->Network Enable to open the program. You will be prompted for a Login and password that you will have received by email.

## Login

Enter the Login and Password and click 'Login' to continue.

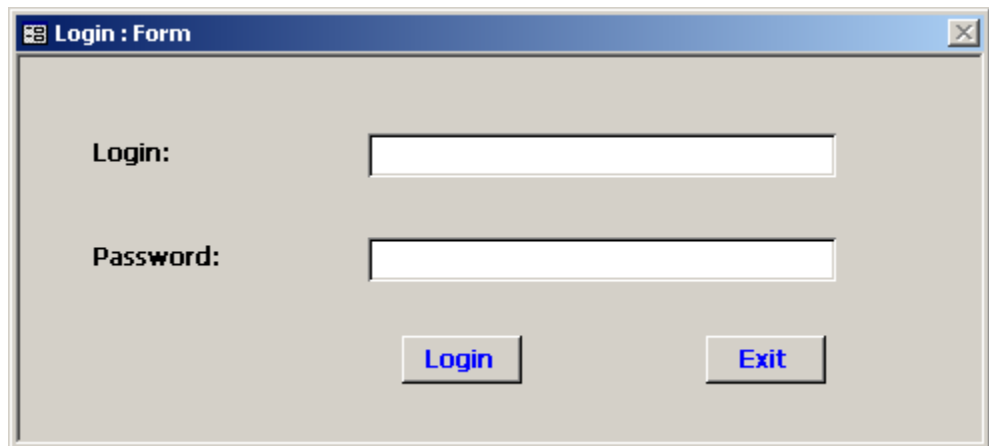
A screenshot of a Windows-style dialog box titled "Login : Form". The dialog has a light gray background and a blue title bar. It contains two text input fields. The first is labeled "Login:" and the second is labeled "Password:". Below the "Login:" field is a button labeled "Login", and below the "Password:" field is a button labeled "Exit".

Illustration 1 User Login The Login and Password will be provided.

## Password Administration - Assign Users

You will go to the Password Administration page, which you see below. Enter information for the person who will be responsible for the administration of the networking software. The username and password can be changed at this time. The location could be office, kitchen, or any description that identifies a users computer and work location. Select Administrator from the Security Class drop-down list. The Administrator is the only user who can access the Password Administration page for assigning users.

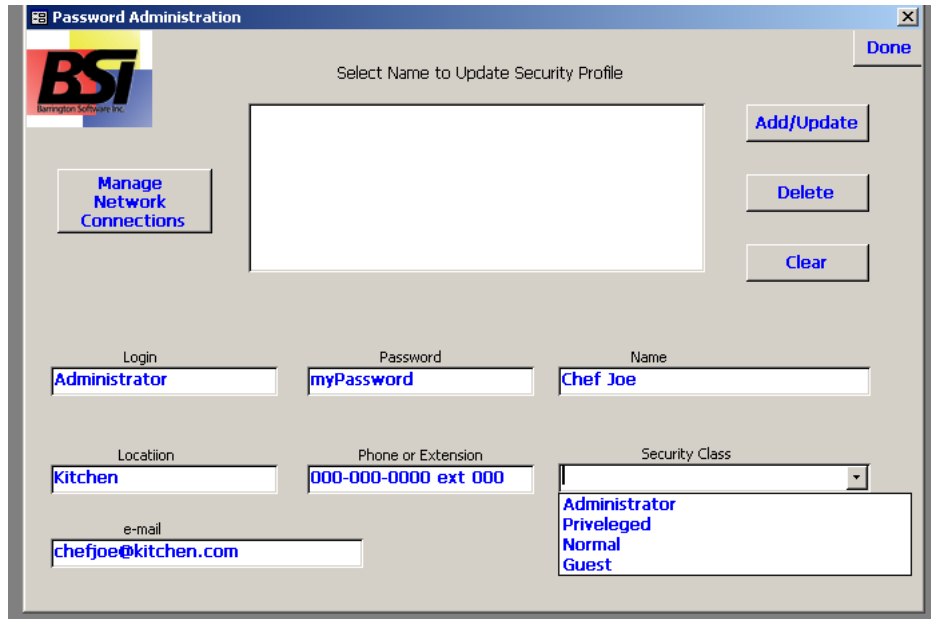


Illustration 2 Password Administration, where users are added.

The administrator can assign other users as needed. The ‘Security Class’ selected will determine what the user has access to and what functions he or she can use. Any number of users can be added. The Security Class limits the user access as follows:

- Administrator** – Access to all functions including Network Enable Functions
- Privileged** – Access to all functions excluding Network Enable Functions
- Normal** – Excludes Inventory Functions and use of local database
- Guest** – Excludes any editing, allows viewing and printing of information

## Manage Network Connections

Network Enable authorizes one application. For more than one application, run the “AuthorizeXXNetworkApplications.exe” that authorizes the number of licenses purchased. This will be on the CD for an initial purchase and sent by email for a subsequent purchase. “AuthorizeXXNetworkApplications.exe” must run each time the number of licenses is increased.

Click ‘Manage Network Connections’ from the ‘Password Administration’ page to begin the process of establishing connections.

**NETWORK ENABLE**

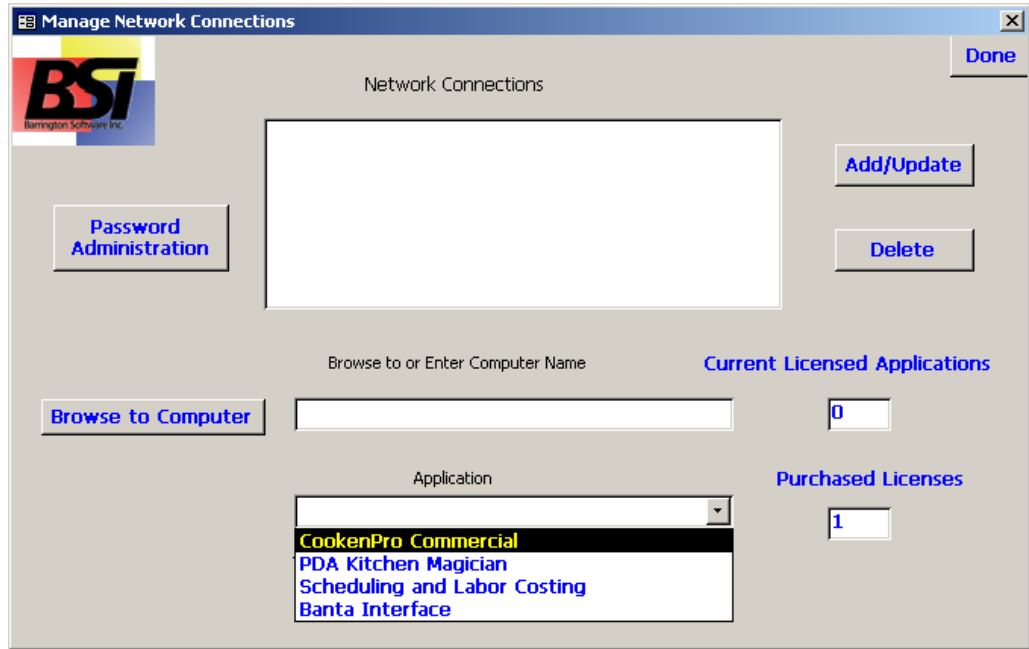


Illustration 3 Manage Network Connections

Select the application from the Application drop-down list, browse to the computer where you want this application to reside, and click add. See the results below.

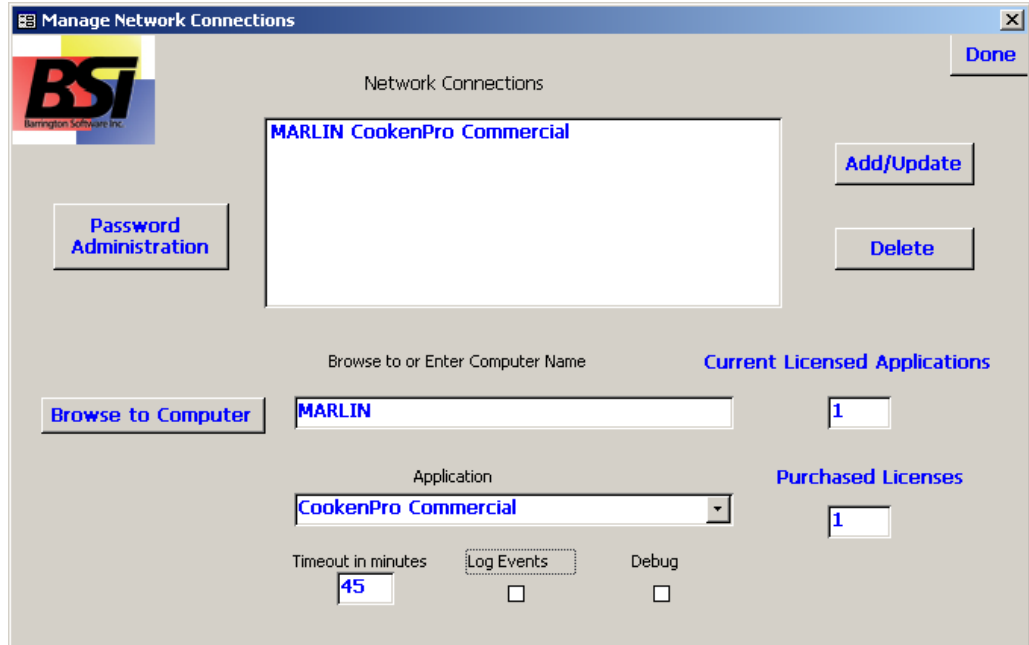


Illustration 4 The One Purchased License has been assigned to a computer.

## NETWORK ENABLE


You can also enter the computer host name if you know it for sure.


The Administrator enters the number of minutes the application residing on this computer can be without activity before the users will 'Timeout' and be automatically logged off. In this example, if the user left the computer for more than 45 minutes and came back to resume working, he or she would have to log back on.


The Administrator can check 'Log Events' if a record of all activity at this Network Connection is desired. Checking 'Debug' would be used more rarely and provides a much more detailed logging of events for the purpose of providing information for support.


After a computer is added through Network Connections, install the BSI Inventory Control or CookenPro application assigned to this computer and run the "NetworkEnableDesktop.exe" that is located in the 'Network Folder'. Installation of "NetworkEnableDesktop.exe" is required for each desktop on a one-time basis.

## Toolbar

 Email Users – The administrator is able to e-mail all users or on-line users only. This is useful for informing of system maintenance or other information relating to the system.

 Whos On – Displays information for all users currently logged in. The Administrator logged into Network Enable is not displayed on the list.

 Release All Locks – The network employs a proprietary locking scheme to limit access to some applications to one user at a time. We have never encountered a circumstance where locks have persisted after network shutdown, but if this circumstance arises, this utility is designed to release all locking.

 Compact and Repair BSI Inventory Control or CookenPro Tables – BSI Inventory Control or CookenPro network tables require reclamation of used space periodically, once or twice a week is appropriate. This utility also repairs faults that it is able to repair in a corrupted database.



✚ View Event Log – When the administrator selects ‘event log’ through Network Enable, many events are logged as users perform them. This utility allows events to be viewed by the administrator, organized by date and time, the most recent first. Entries can be filtered by user, event type, and severity. Events are automatically maintained by the system for 3 months.

## General Requirements

- ✚ Network can be any Wide Area Net (WAN) or Local Area Net (LAN), including a LAN connected by a simple Hub.
- ✚ A server is not required, but can be used.
- ✚ Client software requires windows software – Windows 95, 98, NT, 2000, XP
- ✚ Shared Folder can be on any platform, including Unix.  
We recommend that the shared folder not be on Windows95
- ✚ 10/100 megabit Ethernet connections are recommended, but dial-up and slower connections are mitigated by the user’s ability to work off-line
- ✚ A single network node supports no more than 20 terminals

## General Considerations

In general users can access applications without concern for other users, but some kinds of transactions, such as removing information that they are using such as inventory items or suppliers will impact other on-line users. Users can determine who is working on BSI Inventory Control or CookenPro by going to ‘WhosOn’ on the toolbar.

## Backup

Computers these days are extremely reliable, but failures do happen. Failures could result from power surges or equipment failures. The database itself is extremely reliable. Barrington Software has thousands of databases in the field and there has never been a reported database failure, but it is possible for any database to fail. **Backing up your database is vital for the protection of your business. Failure to do so makes you vulnerable to data loss and if you depend on your computer system, the impact can be severe. Therefore, we recommend that you back up your data.**

Depending on the operating system installed on your computer is possible to set up routine backup jobs that can automatically **backup your database each business day, which is what we recommend.** Contact us if you need assistance in setting up routine back up jobs.

All information is stored in a file `_be.mdb`. This file is located in your network directory. You can find this directory by going to BSI Inventory Control or CookenPro and selecting “About” from the Menu Bar. CookenPro will display “Target Directory:” which is where your file is located. Each individual installation of BSI Inventory Control or CookenPro has `_be.mdb` but the shared `_be.mdb` will be on the same computer as the Network Enable installation.

This file will not practically fit on diskettes. You can back this up to a mass media device – tape drive, Read/Write CD-Rom, a network drive. However, just keeping a backup copy in a folder on your computer protects you against loss, unless your entire computer fails. You are also protected against database corruption by this method. As mentioned we have not had a reported database failure, but it possible.

To copy data tables to a location on your computer.


1. Bring up Windows Explorer and make a folder for your database file.
2. Use the right mouse to copy the `_be.mdb` file and then paste it to the folder that you have just created

Winzip can be used to compress your database if space is a consideration for you.

## Recovery

In the event of catastrophic failure that causes your application not to work, it can be uninstalled and then reinstalled at any time, if the Windows file system is not corrupted. If you have entered information that you want, this may or may not be available, depending on the nature of the failure. If you have reinstalled your application and information that you have entered does not show up, you should recover the information by restoring the `_be.mdb` file that you have previously saved (See Backup). The `_be.mdb` file must be copied to the directory that you have installed your application on. You can find this directory by going to “About” from the Menu Bar and viewing the “Target Directory:” which is where your file is located.

## Troubleshooting

 When a computer first comes up, it takes a minute or two for all mapped network drives to become available. A mapped drive that displays a red ‘X’ in Windows Explorer has not established full communications. Click

## NETWORK ENABLE

it to insure that it is available. Results for communications to the network that have not been fully established include failure to completely relink tables when switching from network to local or vice versa. This is a rare occurrence. Just close the application and try again to connect to the desired database. Users who do not have a privileged or administrator security class will not be able to change from network to local.

✚ If there is an instance when `_be.mdb` is not copied to the network drive upon installation, copy and paste this file manually from your installation folder to the mapped network database folder.

# Index

**Administrator**, 3  
Assign Users, 2  
authorize, 3  
Backup, 7  
Database Folder, 2  
Debug, 5  
**Guest**, 3  
Log Events, 5

Login, 2  
Network Connections, 3  
Network Enable, 0, 1, 3, 7  
**Normal**, 3  
**Privileged**, 3  
Recovery, 8  
Timeout, 5